



CITY OF CAPE TOWN
ISIXEKO SASEKAPA
STAD KAAPSTAD

FLOOR PLANS

City Hall

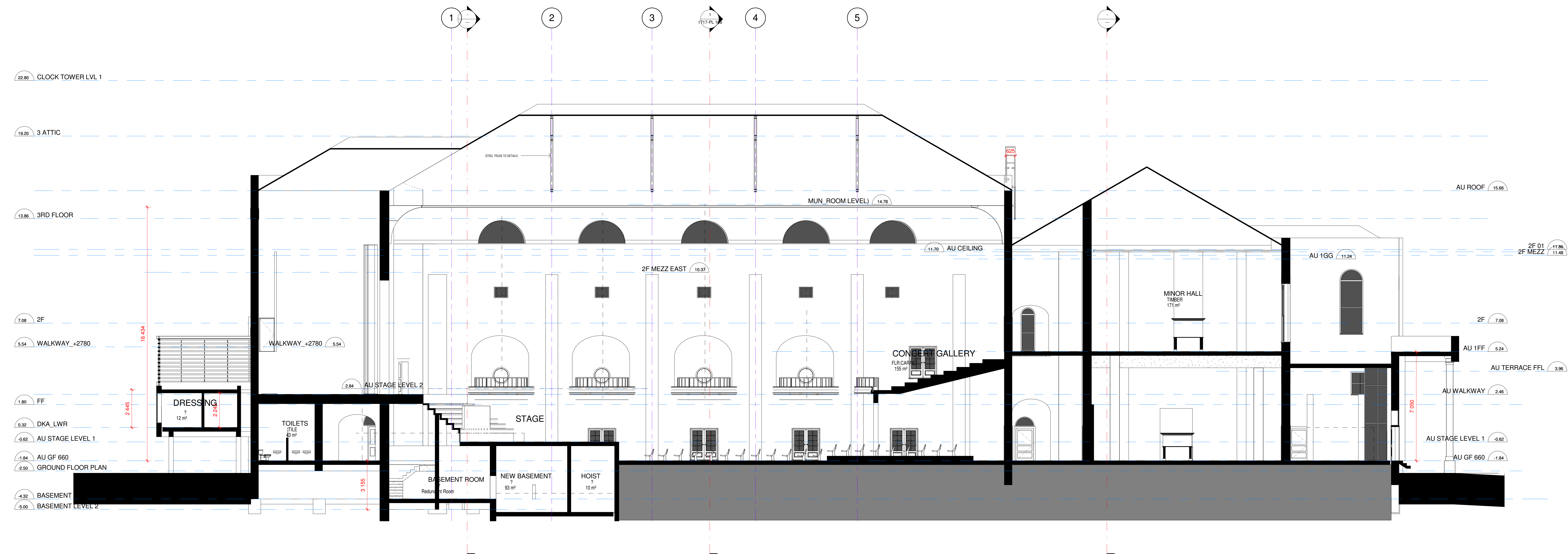
City Hall - NORTH ELEVATION



- NOTES:
1. THIS DRAWING IS NOT A REPRODUCTION OF THE ORIGINAL ARCHITECT OF RECORD'S DOCUMENTATION OR DRAWINGS.
 2. THIS DRAWING IS AN INTERPOLATION OF 3D DIGITAL SCANNING INFORMATION PRODUCED BY AN INDEPENDENT SPECIALIST
 3. WALL THICKNESSES COULD BE NOT BE VERIFIED DUE TO CLADDING ELEMENTS AND FIXED AND LOOSE FURNITURE PICKED UP IN SCAN MEASUREMENTS.
 4. VARIOUS ELEMENTS MAY HAVE BEEN ALTERED AT THE TIME OF THIS DRAWING DUE TO RENNOVATION WORKS AFFECTING THE CONCERT HALL. PLEASE REFER TO THE ARCHITECT OF RECORD FOR THE CONCERT HALL AND RELATED AREAS AFFECTED.
 5. FLOOR SLABS HAVE BEEN INDICATED AT A NOMINAL THICKNESS OF 250MM
 6. RAINWATER GOODS, AND OTHER MEP SERVICES ARE NOT SHOWN ON THESE DRAWINGS
 7. THIS MODEL SERVES AS A BASE ONTO WHICH DETAIL RECORDS CAN BE OVERLAID INCREMENTALLY OVER TIME.

1 : 100

City Hall - SECTION A-A



- NOTES:
1. THIS DRAWING IS NOT A REPRODUCTION OF THE ORIGINAL ARCHITECT OF RECORD'S DOCUMENTATION OR DRAWINGS.
 2. THIS DRAWING IS AN INTERPOLATION OF 3D DIGITAL SCANNING INFORMATION PRODUCED BY AN INDEPENDENT SPECIALIST
 3. WALL THICKNESSES COULD BE NOT BE VERIFIED DUE TO CLADDING ELEMENTS AND FIXED AND LOOSE FURNITURE PICKED UP IN SCAN MEASUREMENTS.
 4. VARIOUS ELEMENTS MAY HAVE BEEN ALTERED AT THE TIME OF THIS DRAWING DUE TO RENNOVATION WORKS AFFECTING THE CONCERT HALL. PLEASE REFER TO THE ARCHITECT OF RECORD FOR THE CONCERT HALL AND RELATED AREAS AFFECTED.
 5. FLOOR SLABS HAVE BEEN INDICATED AT A NOMINAL THICKNESS OF 250MM
 6. RAINWATER GOODS, AND OTHER MEP SERVICES ARE NOT SHOWN ON THESE DRAWINGS
 7. THIS MODEL SERVES AS A BASE ONTO WHICH DETAIL RECORDS CAN BE OVERLAID INCREMENTALLY OVER TIME.

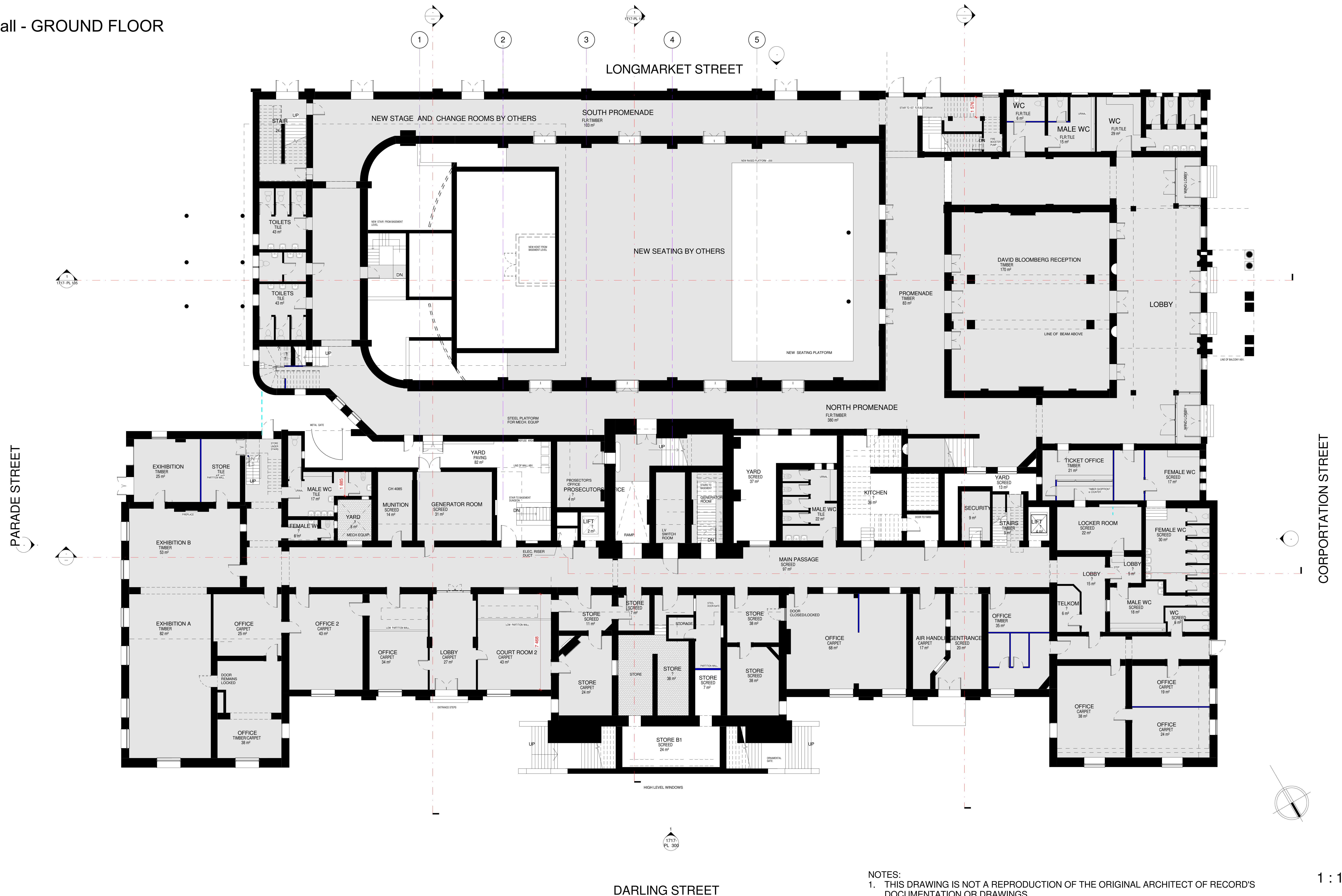
59.25 CT LVL 9_ROOF PLAN



1. THIS DRAWING IS NOT A REPRODUCTION OF THE ORIGINAL ARCHITECT OF RECORD'S DOCUMENTATION OR DRAWINGS.
2. THIS DRAWING IS AN INTERPOLATION OF 3D DIGITAL SCANNING INFORMATION PRODUCED BY AN INDEPENDENT SPECIALIST
3. WALL THICKNESSES COULD BE NOT BE VERIFIED DUE TO CLADDING ELEMENTS AND FIXED AND LOOSE FURNITURE PICKED UP IN SCAN MEASUREMENTS.
4. VARIOUS ELEMENTS MAY HAVE BEEN ALTERED AT THE TIME OF THIS DRAWING DUE TO RENOVATION WORKS AFFECTING THE CONCERT HALL. PLEASE REFER TO THE ARCHITECT OF RECORD FOR THE CONCERT HALL AND RELATED AREAS AFFECTED.
5. FLOOR SLABS HAVE BEEN INDICATED AT A NOMINAL THICKNESS OF 250MM
6. RAINWATER GOODS, AND OTHER MEP SERVICES ARE NOT SHOWN ON THESE DRAWINGS
7. THIS MODEL SERVES AS A BASE ONTO WHICH DETAIL RECORDS CAN BE OVERLAID INCREMENTALLY OVER TIME.

1 : 100

City Hall - GROUND FLOOR



- NOTES:
1. THIS DRAWING IS NOT A REPRODUCTION OF THE ORIGINAL ARCHITECT OF RECORD'S DOCUMENTATION OR DRAWINGS.
 2. THIS DRAWING IS AN INTERPOLATION OF 3D DIGITAL SCANNING INFORMATION PRODUCED BY AN INDEPENDENT SPECIALIST
 3. WALL THICKNESSES COULD BE NOT BE VERIFIED DUE TO CLADDING ELEMENTS AND FIXED AND LOOSE FURNITURE PICKED UP IN SCAN MEASUREMENTS.
 4. VARIOUS ELEMENTS MAY HAVE BEEN ALTERED AT THE TIME OF THIS DRAWING DUE TO RENNOVATION WORKS AFFECTING THE CONCERT HALL. PLEASE REFER TO THE ARCHITECT OF RECORD FOR THE CONCERT HALL AND RELATED AREAS AFFECTED.
 5. FLOOR SLABS HAVE BEEN INDICATED AT A NOMINAL THICKNESS OF 250MM
 6. RAINWATER GOODS, AND OTHER MEP SERVICES ARE NOT SHOWN ON THESE DRAWINGS
 7. THIS MODEL SERVES AS A BASE ONTO WHICH DETAIL RECORDS CAN BE OVERLAID INCREMENTALLY OVER TIME.

1 : 100

City Hall - FIRST FLOOR



- NOTES:
1. THIS DRAWING IS NOT A REPRODUCTION OF THE ORIGINAL ARCHITECT OF RECORD'S DOCUMENTATION OR DRAWINGS.
 2. THIS DRAWING IS AN INTERPOLATION OF 3D DIGITAL SCANNING INFORMATION PRODUCED BY AN INDEPENDENT SPECIALIST
 3. WALL THICKNESSES COULD BE NOT BE VERIFIED DUE TO CLADDING ELEMENTS AND FIXED AND LOOSE FURNITURE PICKED UP IN SCAN MEASUREMENTS.
 4. VARIOUS ELEMENTS MAY HAVE BEEN ALTERED AT THE TIME OF THIS DRAWING DUE TO RENNOVATION WORKS AFFECTING THE CONCERT HALL. PLEASE REFER TO THE ARCHITECT OF RECORD FOR THE CONCERT HALL AND RELATED AREAS AFFECTED.
 5. FLOOR SLABS HAVE BEEN INDICATED AT A NOMINAL THICKNESS OF 250MM
 6. RAINWATER GOODS, AND OTHER MEP SERVICES ARE NOT SHOWN ON THESE DRAWINGS
 7. THIS MODEL SERVES AS A BASE ONTO WHICH DETAIL RECORDS CAN BE OVERLAID INCREMENTALLY OVER TIME.

1 : 100

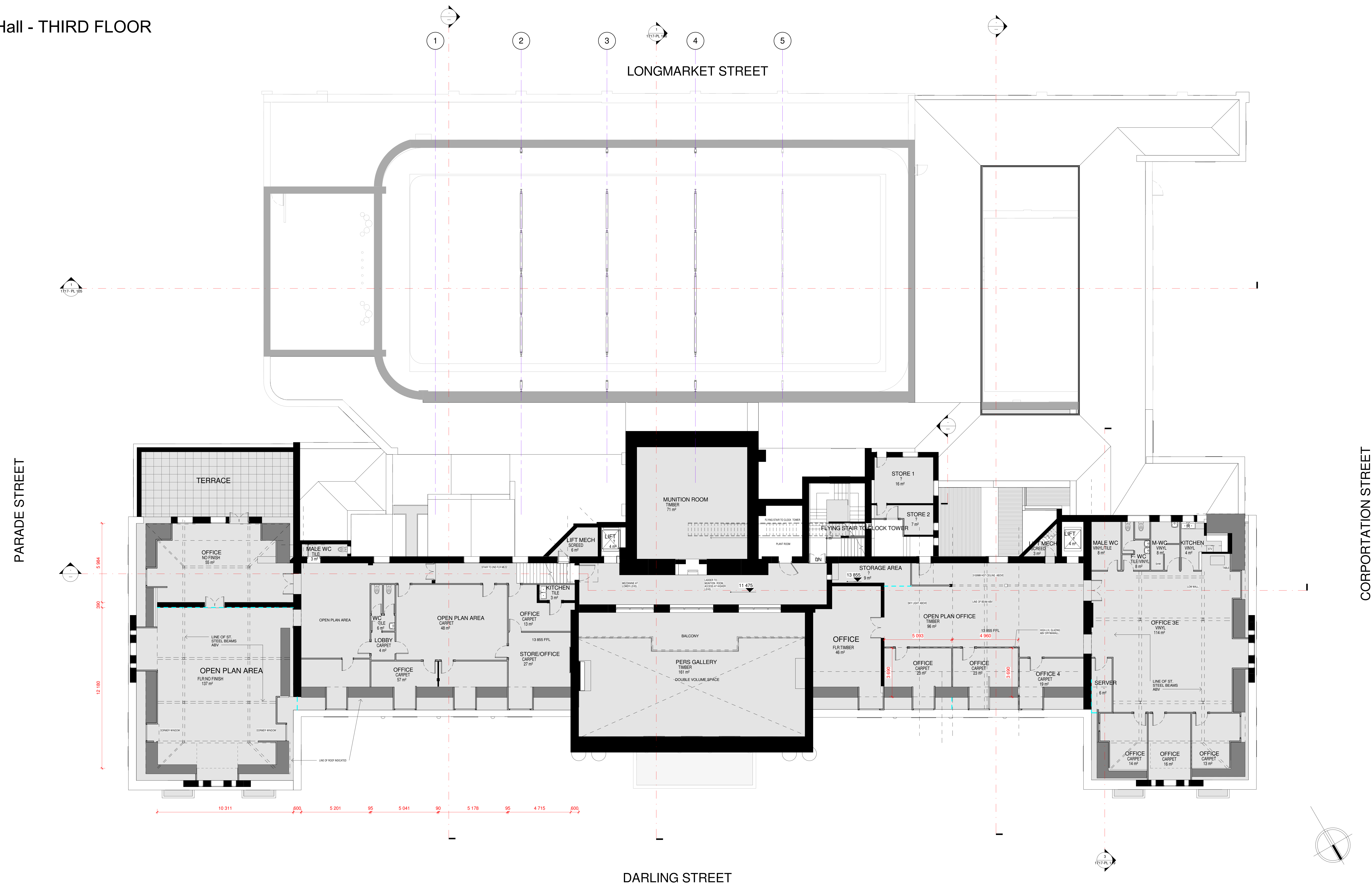
City Hall - SECOND FLOOR



- NOTES:
1. THIS DRAWING IS NOT A REPRODUCTION OF THE ORIGINAL ARCHITECT OF RECORD'S DOCUMENTATION OR DRAWINGS.
 2. THIS DRAWING IS AN INTERPOLATION OF 3D DIGITAL SCANNING INFORMATION PRODUCED BY AN INDEPENDENT SPECIALIST
 3. WALL THICKNESSES COULD BE NOT BE VERIFIED DUE TO CLADDING ELEMENTS AND FIXED AND LOOSE FURNITURE PICKED UP IN SCAN MEASUREMENTS.
 4. VARIOUS ELEMENTS MAY HAVE BEEN ALTERED AT THE TIME OF THIS DRAWING DUE TO RENNOVATION WORKS AFFECTING THE CONCERT HALL. PLEASE REFER TO THE ARCHITECT OF RECORD FOR THE CONCERT HALL AND RELATED AREAS AFFECTED.
 5. FLOOR SLABS HAVE BEEN INDICATED AT A NOMINAL THICKNESS OF 250MM
 6. RAINWATER GOODS, AND OTHER MEP SERVICES ARE NOT SHOWN ON THESE DRAWINGS
 7. THIS MODEL SERVES AS A BASE ONTO WHICH DETAIL RECORDS CAN BE OVERLAID INCREMENTALLY OVER TIME.

1 : 100

City Hall - THIRD FLOOR

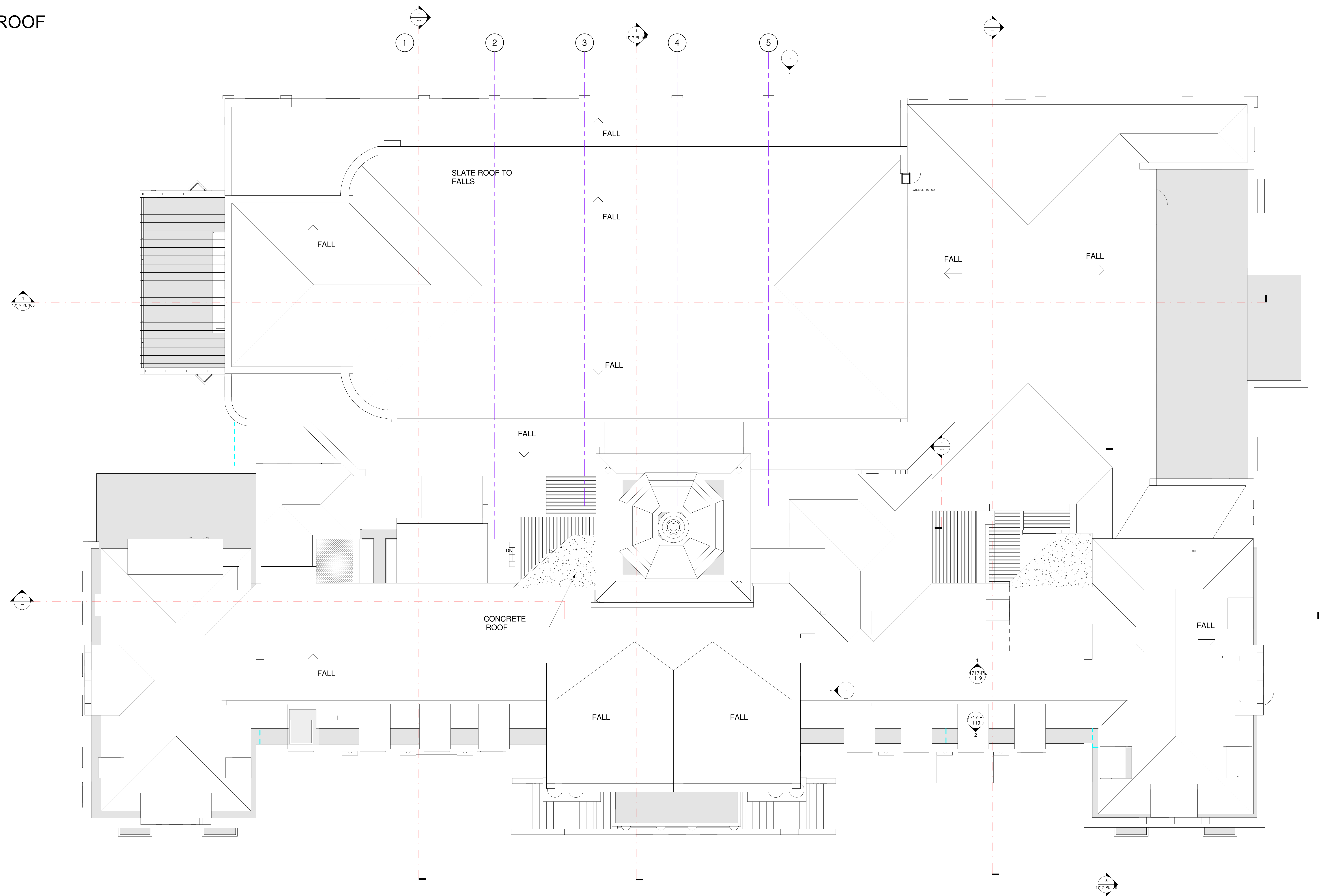


1 3RD FLOOR
1 : 100

- NOTES:
1. THIS DRAWING IS NOT A REPRODUCTION OF THE ORIGINAL ARCHITECT OF RECORD'S DOCUMENTATION OR DRAWINGS.
 2. THIS DRAWING IS AN INTERPOLATION OF 3D DIGITAL SCANNING INFORMATION PRODUCED BY AN INDEPENDENT SPECIALIST
 3. WALL THICKNESSES COULD BE NOT BE VERIFIED DUE TO CLADDING ELEMENTS AND FIXED AND LOOSE FURNITURE PICKED UP IN SCAN MEASUREMENTS.
 4. VARIOUS ELEMENTS MAY HAVE BEEN ALTERED AT THE TIME OF THIS DRAWING DUE TO RENNOVATION WORKS AFFECTING THE CONCERT HALL. PLEASE REFER TO THE ARCHITECT OF RECORD FOR THE CONCERT HALL AND RELATED AREAS AFFECTED.
 5. FLOOR SLABS HAVE BEEN INDICATED AT A NOMINAL THICKNESS OF 250MM
 6. RAINWATER GOODS, AND OTHER MEP SERVICES ARE NOT SHOWN ON THESE DRAWINGS
 7. THIS MODEL SERVES AS A BASE ONTO WHICH DETAIL RECORDS CAN BE OVERLAID INCREMENTALLY OVER TIME.

1 : 100

City Hall - ROOF



- NOTES:
1. THIS DRAWING IS NOT A REPRODUCTION OF THE ORIGINAL ARCHITECT OF RECORD'S DOCUMENTATION OR DRAWINGS.
 2. THIS DRAWING IS AN INTERPOLATION OF 3D DIGITAL SCANNING INFORMATION PRODUCED BY AN INDEPENDENT SPECIALIST
 3. WALL THICKNESSES COULD BE NOT BE VERIFIED DUE TO CLADDING ELEMENTS AND FIXED AND LOOSE FURNITURE PICKED UP IN SCAN MEASUREMENTS.
 4. VARIOUS ELEMENTS MAY HAVE BEEN ALTERED AT THE TIME OF THIS DRAWING DUE TO RENNOVATION WORKS AFFECTING THE CONCERT HALL. PLEASE REFER TO THE ARCHITECT OF RECORD FOR THE CONCERT HALL AND RELATED AREAS AFFECTED.
 5. FLOOR SLABS HAVE BEEN INDICATED AT A NOMINAL THICKNESS OF 250MM
 6. RAINWATER GOODS, AND OTHER MEP SERVICES ARE NOT SHOWN ON THESE DRAWINGS
 7. THIS MODEL SERVES AS A BASE ONTO WHICH DETAIL RECORDS CAN BE OVERLAID INCREMENTALLY OVER TIME.